

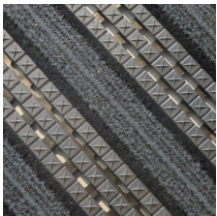
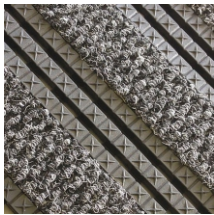


Premier Star Gripper Plus

Interlocking carpet entrance tiles to keep internal floor coverings clean and slip free



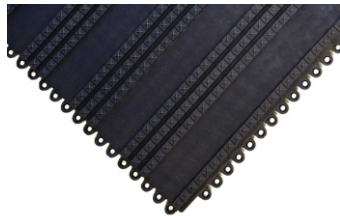
- NEW – Closed Construction Tiles.
- Interlocking entrance tiles designed for a matwell.
- Two surface options available: Polypropylene carpet or Woven Brush.
- Solid surface tiles effectively capture dirt to protect interior floors.
- Hardwearing woven brush inserts scrape dirt and wipe moisture.
- Woven Brush showed no wear or tear after 100 000 scrapes with point weight of 2kg.
- PVC base tile is manufactured from 100% recycled materials.
- Suitable for high volume footfall in commercial locations.
- Tiles simply clip together on site for ease of transportation and installation.
- Move, clean or replace individual tiles – they clip together with ease.



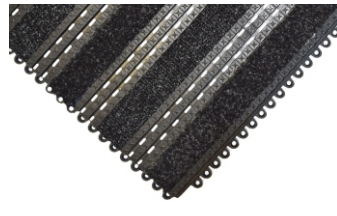
Styles Available



Open Construction



Closed Construction



Dual Tactic/ Anthracite (open)



Dual Tactic/ Anthracite (closed)



Dual Polish/Grey (open)

Dual Polish/ Grey (closed)

Parts

Part Number	Size	Colour	Weight (kg)
PSG010001	445 mm x 290 mm x 12.5 mm	Charcoal	1.15
PSG010001C	440 mm x 290 mm x 12.5 mm	Charcoal	1.15
PSG010002	445 mm x 290 mm x 12.5 mm	Charcoal	1.15

Technical Specifications

Material	Flexible PVC with Woven Brush Inserts or Flexible PVC with Polypropylene Inserts
Backing	Open design
Product Height	14 mm
Product Weight	9 kg/m ²
Typical Applications	Interior facility entrances in a matwell
Cleaning Method	Vacuum clean regularly or brush vigorously with hard bristled broom
Fire Tested to	BS EN 13501-1
Guarantee	Up to 5 years
Slip Tested to	BS 7976-2
Tile height	14 mm

☎ 016 976 7001

✉ sales@tharochem.co.za

🌐 www.tharochem.co.za

📍 14 William Stow St, Sasolburg

